

**South Cambridgeshire Local Plan
Composite Main Modifications - 2018**



**South Cambridgeshire
Proposed Submission
Policies Map: July 2013**
Inset No. 76 Melbourn
Map 1 of 3
Scale 1:5000

Reproduced from the Ordnance Survey Mapping with the permission of the Controller of Her Majesty's Stationery Office © Crown Copyright. Unauthorised reproduction infringes Crown Copyright and may lead to prosecution or civil proceedings.

NO FURTHER COPIES MAY BE MADE. SCDC Licence 100022500 (2018)

**Main Modification SC326i:
Delete Local Green Space
Site NH/12-108**

NH/12-109b

NH/12-109a

NH/12-110

**Main Modification SC326l:
Add Local Green Space
Site NH/12-115
(additional area to north)**

NH/12-114

**Main Modification SC326c:
Delete Local Green Space
Site NH/12-116 and replace with
Protected Village Amenity Area**

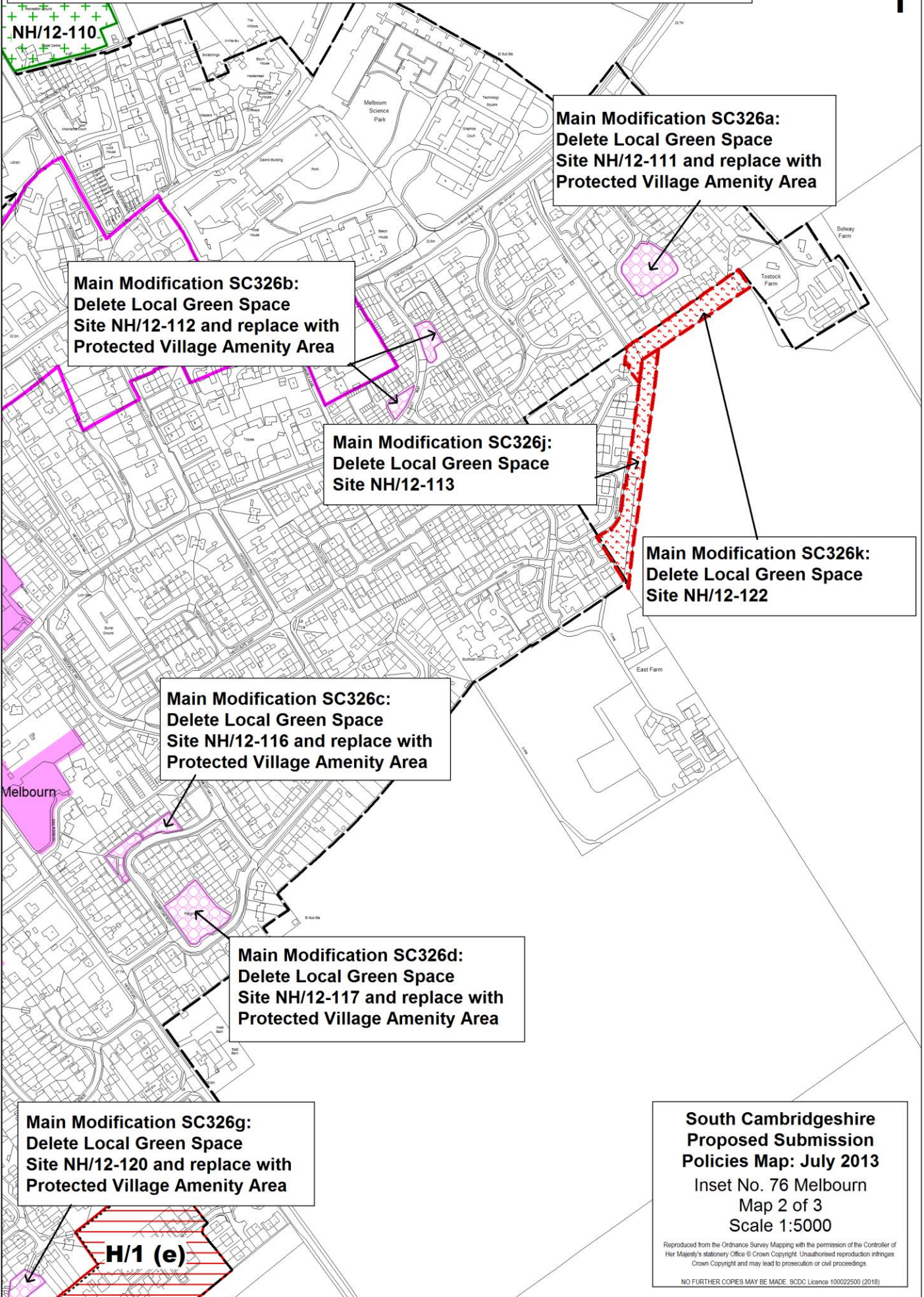
**Main Modification SC326d:
Delete Local Green Space
Site NH/12-117 and replace with
Protected Village Amenity Area**

NH/12-115

**Main Modification SC326e:
Delete Local Green Space
Site NH/12-118 and replace with
Protected Village Amenity Area**

Melbourn

South Cambridgeshire Local Plan Composite Main Modifications - 2018



NH/12-110

Main Modification SC326a:
Delete Local Green Space Site NH/12-111 and replace with Protected Village Amenity Area

Main Modification SC326b:
Delete Local Green Space Site NH/12-112 and replace with Protected Village Amenity Area

Main Modification SC326j:
Delete Local Green Space Site NH/12-113

Main Modification SC326k:
Delete Local Green Space Site NH/12-122

Main Modification SC326c:
Delete Local Green Space Site NH/12-116 and replace with Protected Village Amenity Area

Main Modification SC326d:
Delete Local Green Space Site NH/12-117 and replace with Protected Village Amenity Area

Main Modification SC326g:
Delete Local Green Space Site NH/12-120 and replace with Protected Village Amenity Area

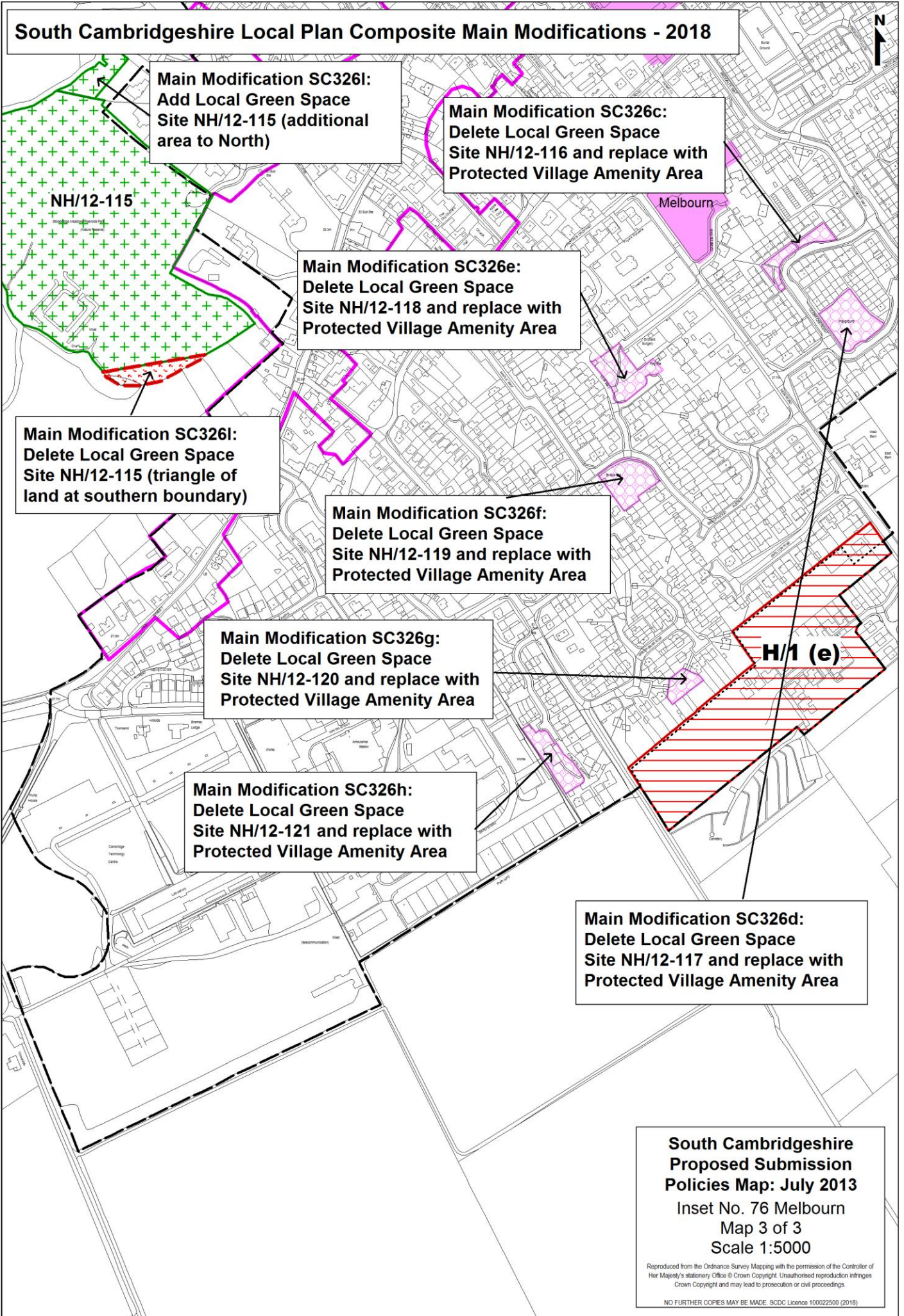
H/1 (e)

**South Cambridgeshire
Proposed Submission
Policies Map: July 2013**
Inset No. 76 Melbourn
Map 2 of 3
Scale 1:5000

Reproduced from the Ordnance Survey Mapping with the permission of the Controller of Her Majesty's Stationery Office © Crown Copyright. Unauthorised reproduction infringes Crown Copyright and may lead to prosecution or civil proceedings.

NO FURTHER COPIES MAY BE MADE. SDCD Licence 100022500 (2018)

South Cambridgeshire Local Plan Composite Main Modifications - 2018



Main Modification SC326l:
 Add Local Green Space
 Site NH/12-115 (additional
 area to North)

Main Modification SC326c:
 Delete Local Green Space
 Site NH/12-116 and replace with
 Protected Village Amenity Area

Main Modification SC326e:
 Delete Local Green Space
 Site NH/12-118 and replace with
 Protected Village Amenity Area

Main Modification SC326i:
 Delete Local Green Space
 Site NH/12-115 (triangle of
 land at southern boundary)

Main Modification SC326f:
 Delete Local Green Space
 Site NH/12-119 and replace with
 Protected Village Amenity Area

Main Modification SC326g:
 Delete Local Green Space
 Site NH/12-120 and replace with
 Protected Village Amenity Area

Main Modification SC326h:
 Delete Local Green Space
 Site NH/12-121 and replace with
 Protected Village Amenity Area

Main Modification SC326d:
 Delete Local Green Space
 Site NH/12-117 and replace with
 Protected Village Amenity Area

**South Cambridgeshire
 Proposed Submission
 Policies Map: July 2013**
 Inset No. 76 Melbourn
 Map 3 of 3
 Scale 1:5000

Reproduced from the Ordnance Survey Mapping with the permission of the Controller of Her Majesty's Stationery Office © Crown Copyright. Unauthorised reproduction infringes Crown Copyright and may lead to prosecution or civil proceedings.

NO FURTHER COPIES MAY BE MADE. SDCD Licence 100022500 (2018)

**South Cambridgeshire Local Plan
Composite Main Modifications - 2018**

Meldreth



**NOTE:
Previously
a PVAA**

**Main Modification SC327:
Delete Local Green Space
Site NH/12-124 and replace with
Protected Village Amenity Area**

NH/12-123

**South Cambridgeshire
Proposed Submission
Policies Map: July 2013**
Inset No. 77 Meldreth
Map 2 of 2
Scale 1:5000

Reproduced from the Ordnance Survey Mapping with the permission of the Controller of Her Majesty's Stationery Office © Crown Copyright. Unauthorised reproduction infringes Crown Copyright and may lead to prosecution or civil proceedings.

NO FURTHER COPIES MAY BE MADE. SCDC Licence 100022500 (2018)

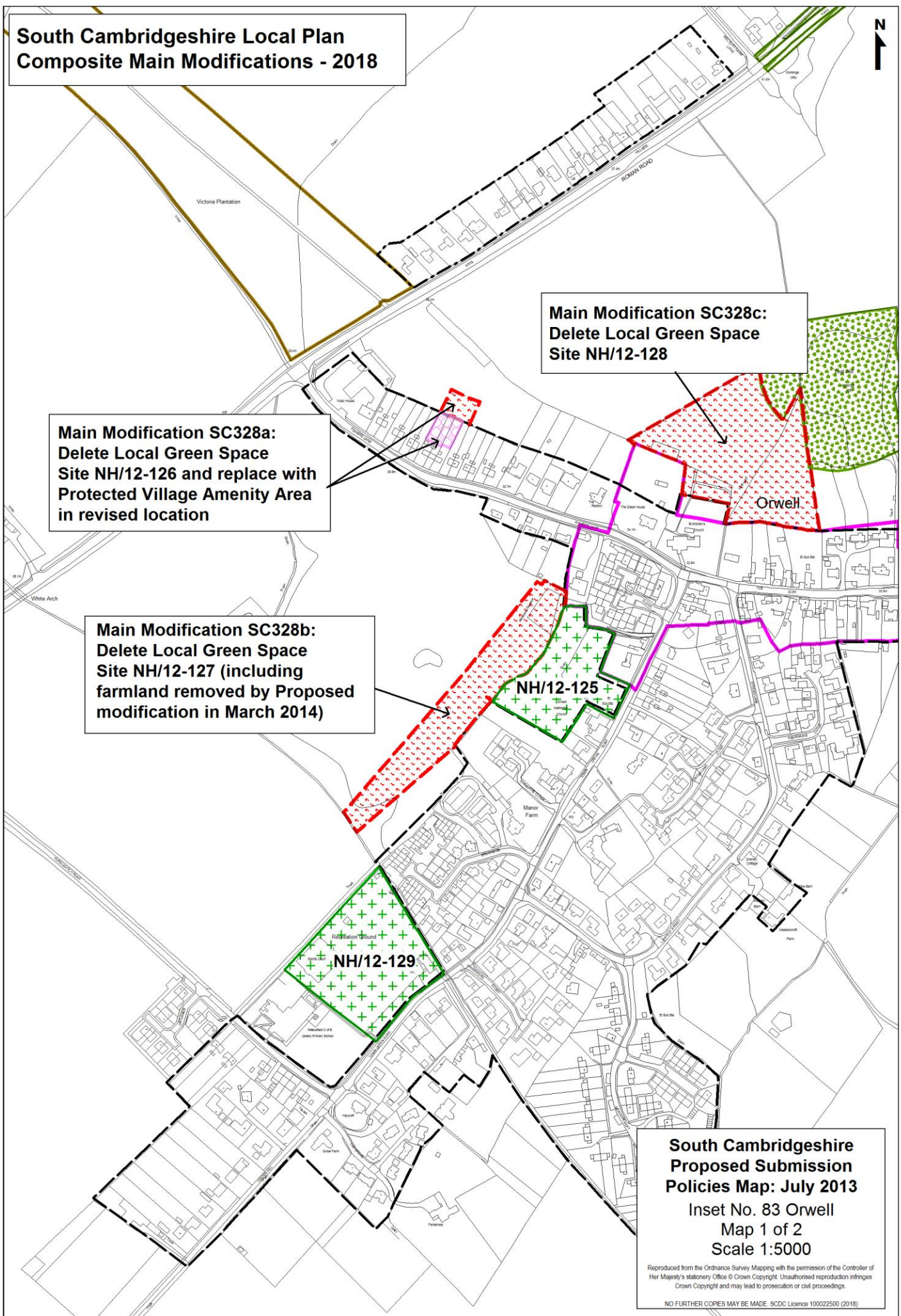
**South Cambridgeshire Local Plan
Composite Main Modifications - 2018**



**Main Modification SC328a:
Delete Local Green Space
Site NH/12-126 and replace with
Protected Village Amenity Area
in revised location**

**Main Modification SC328c:
Delete Local Green Space
Site NH/12-128**

**Main Modification SC328b:
Delete Local Green Space
Site NH/12-127 (including
farmland removed by Proposed
modification in March 2014)**



**South Cambridgeshire
Proposed Submission
Policies Map: July 2013**
Inset No. 83 Orwell
Map 1 of 2
Scale 1:5000

Reproduced from the Ordnance Survey Mapping with the permission of the Controller of Her Majesty's Stationery Office © Crown Copyright. Unauthorised reproduction infringes Crown Copyright and may lead to prosecution or civil proceedings.

NO FURTHER COPIES MAY BE MADE. SDCD Licence 100022500 (2018)

**South Cambridgeshire Local Plan
Composite Main Modifications - 2018**

**Main Modification SC328a:
Delete Local Green Space
Site NH/12-126 and replace with
Protected Village Amenity Area
in revised location**

**Main Modification SC328c:
Delete Local Green Space
Site NH/12-128**

**Main Modification SC328b:
Delete Local Green Space
Site NH/12-127 (including
farmland removed by Proposed
modification in March 2014)**

**South Cambridgeshire
Proposed Submission
Policies Map: July 2013**
Inset No. 83 Orwell
Map 2 of 2
Scale 1:5000

Reproduced from the Ordnance Survey Mapping with the permission of the Controller of Her Majesty's Stationery Office © Crown Copyright. Unauthorised reproduction infringes Crown Copyright and may lead to prosecution or civil proceedings.

NO FURTHER COPIES MAY BE MADE. SDCD Licence 100022500 (2018)

**South Cambridgeshire Local Plan
Composite Main Modifications - 2018**



**Main Modification SC329b:
Delete Local Green Space
Site NH/12-131 (Note: PVAA
on Adopted Proposals Map 2012)**

**Main Modification SC329a:
Delete Local Green Space
Site NH/12-130**

**Main Modification SC329c:
Delete Open Space Allocation
Policy SC/1 (1a)**

**SP/14 (2f)
(NOTE: no policy area
in Draft Local Plan)**

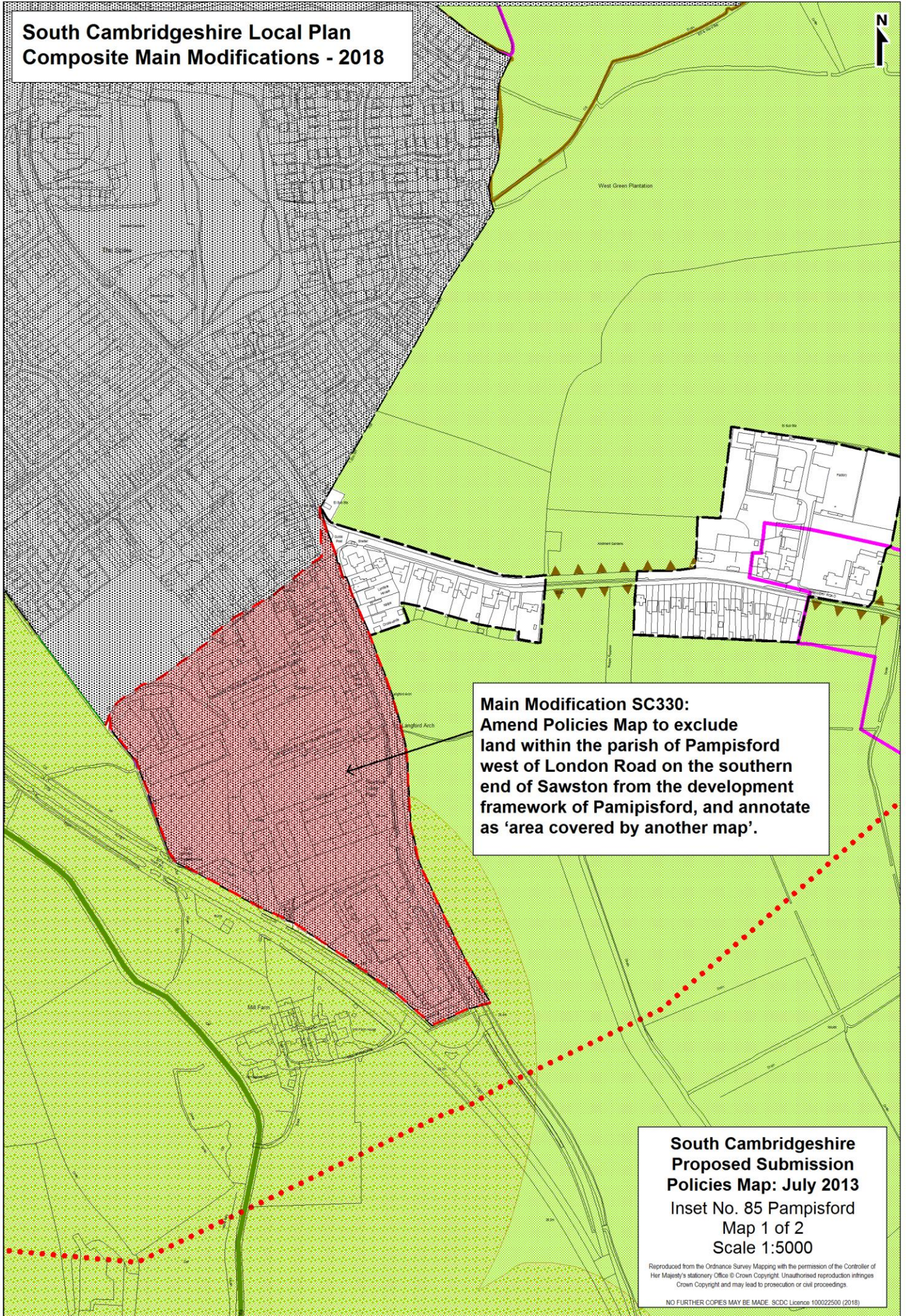
**South Cambridgeshire
Proposed Submission
Policies Map: July 2013**

Inset No. 84 Over
Map 1 of 3
Scale 1:5000

Reproduced from the Ordnance Survey Mapping with the permission of the Controller of Her Majesty's Stationery Office © Crown Copyright. Unauthorised reproduction infringes Crown Copyright and may lead to prosecution or civil proceedings.

NO FURTHER COPIES MAY BE MADE. SDCD Licence 100022500 (2018)

**South Cambridgeshire Local Plan
Composite Main Modifications - 2018**



Main Modification SC330:
Amend Policies Map to exclude land within the parish of Pampisford west of London Road on the southern end of Sawston from the development framework of Pampisford, and annotate as 'area covered by another map'.

**South Cambridgeshire
Proposed Submission
Policies Map: July 2013**
Inset No. 85 Pampisford
Map 1 of 2
Scale 1:5000

Reproduced from the Ordnance Survey Mapping with the permission of the Controller of Her Majesty's Stationery Office © Crown Copyright. Unauthorised reproduction infringes Crown Copyright and may lead to prosecution or civil proceedings.

NO FURTHER COPIES MAY BE MADE. SCDC Licence 100022500 (2018)

**South Cambridgeshire Local Plan
Composite Main Modifications - 2018**

**South Cambridgeshire
Proposed Submission
Policies Map: July 2013**

Inset No. 86 Papworth Everard
Map 1 of 4
Scale 1:5000

Reproduced from the Ordnance Survey Mapping with the permission of the Controller of Her Majesty's Stationery Office © Crown Copyright. Unauthorised reproduction infringes Crown Copyright and may lead to prosecution or civil proceedings.

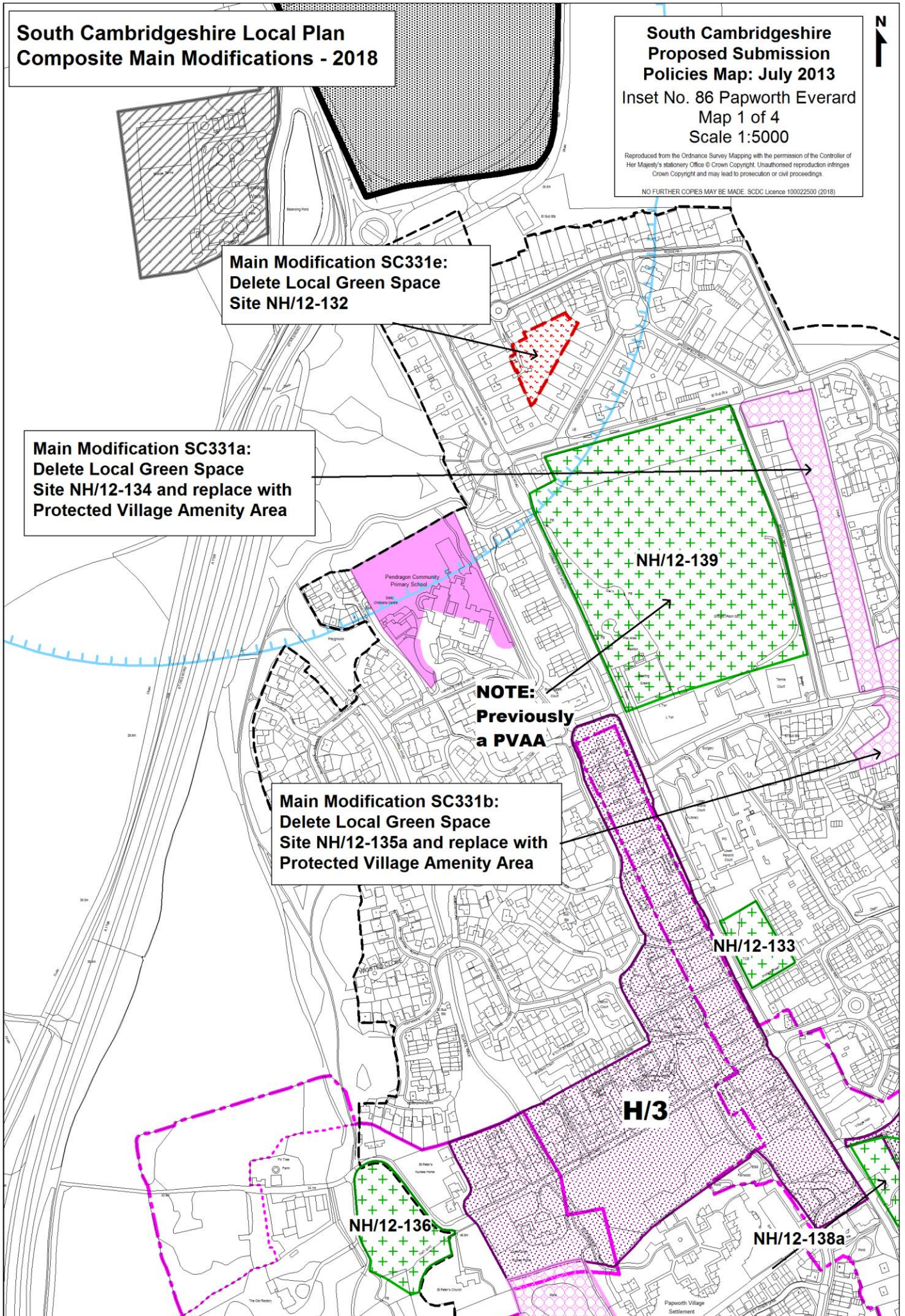
NO FURTHER COPIES MAY BE MADE. SDC Licence 100022500 (2018)

**Main Modification SC331e:
Delete Local Green Space
Site NH/12-132**

**Main Modification SC331a:
Delete Local Green Space
Site NH/12-134 and replace with
Protected Village Amenity Area**

**NOTE:
Previously
a PVAA**

**Main Modification SC331b:
Delete Local Green Space
Site NH/12-135a and replace with
Protected Village Amenity Area**



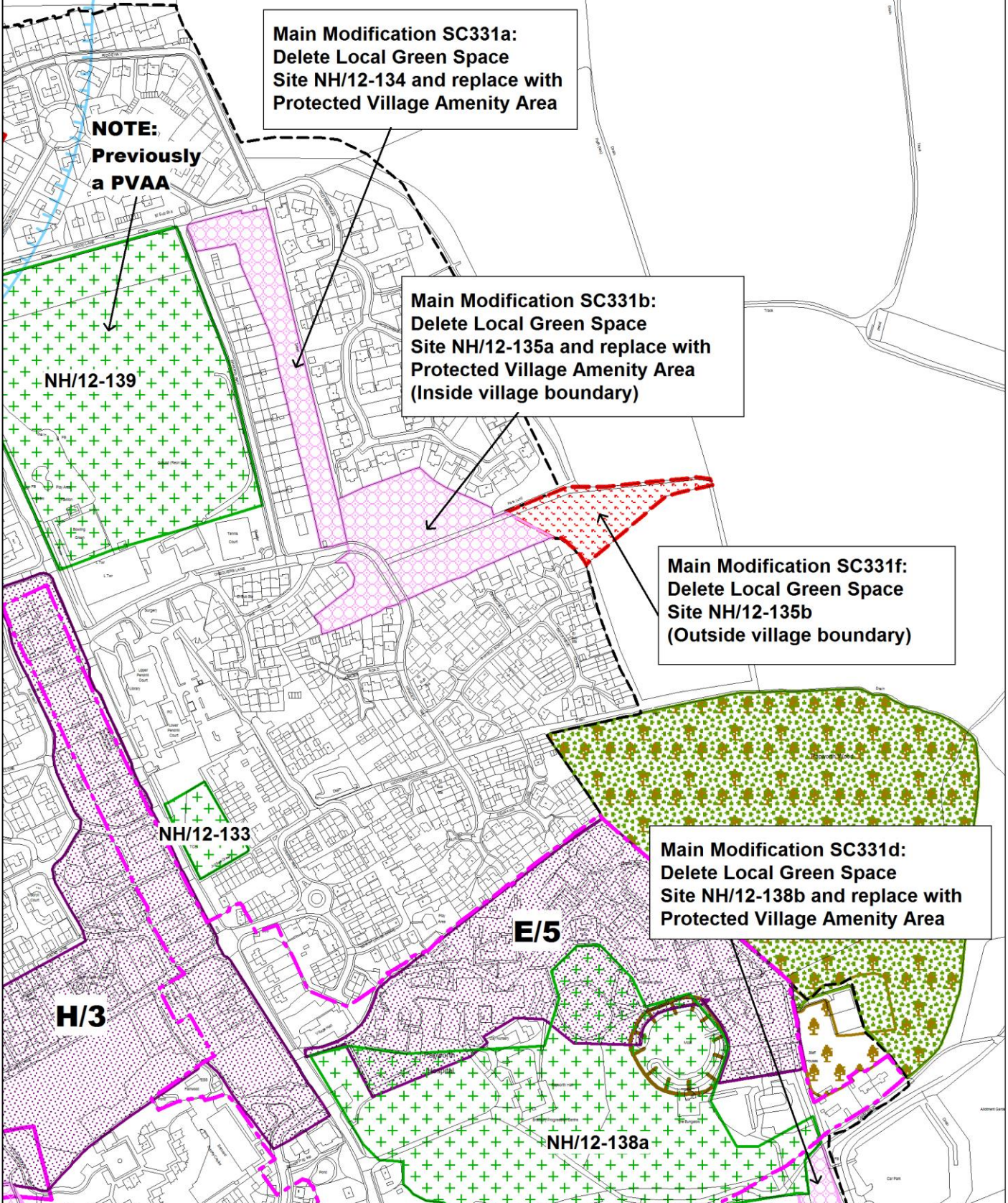
**South Cambridgeshire Local Plan
Composite Main Modifications - 2018**

**South Cambridgeshire
Proposed Submission
Policies Map: July 2013**

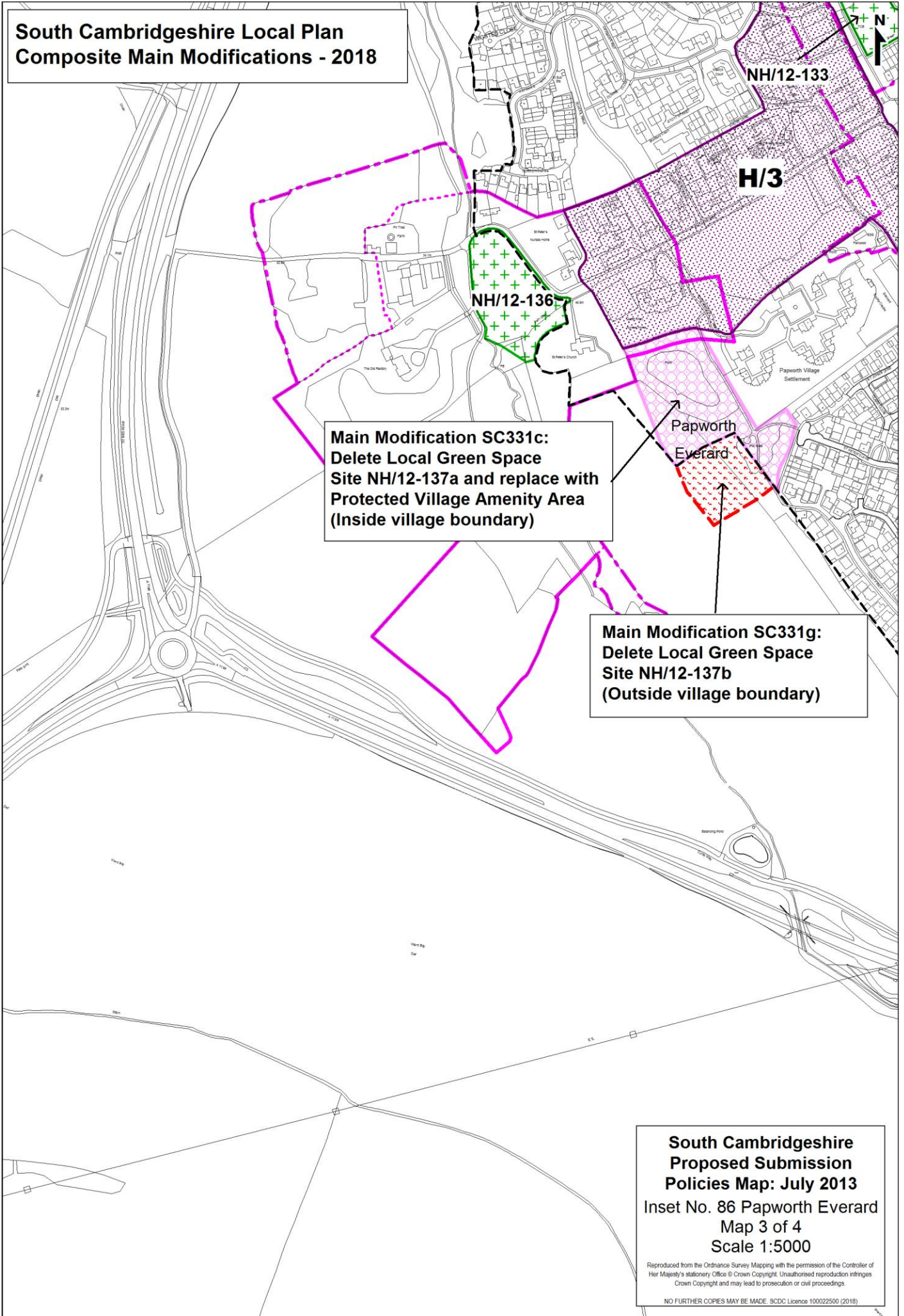
Inset No. 86 Papworth Everard
Map 2 of 4
Scale 1:5000

Reproduced from the Ordnance Survey Mapping with the permission of the Controller of Her Majesty's Stationery Office © Crown Copyright. Unauthorised reproduction infringes Crown Copyright and may lead to prosecution or civil proceedings.

NO FURTHER COPIES MAY BE MADE. SDC Licence 100022500 (2018)



**South Cambridgeshire Local Plan
Composite Main Modifications - 2018**



**South Cambridgeshire
Proposed Submission
Policies Map: July 2013**
Inset No. 86 Papworth Everard
Map 3 of 4
Scale 1:5000

Reproduced from the Ordnance Survey Mapping with the permission of the Controller of Her Majesty's Stationery Office © Crown Copyright. Unauthorised reproduction infringes Crown Copyright and may lead to prosecution or civil proceedings.

NO FURTHER COPIES MAY BE MADE. SDCD Licence 100022500 (2018)