

**Key**  
**Key Locations**

- Residential Sites
- Employment Sites
- Transport Sites

Cambridge South Catchment (30min)

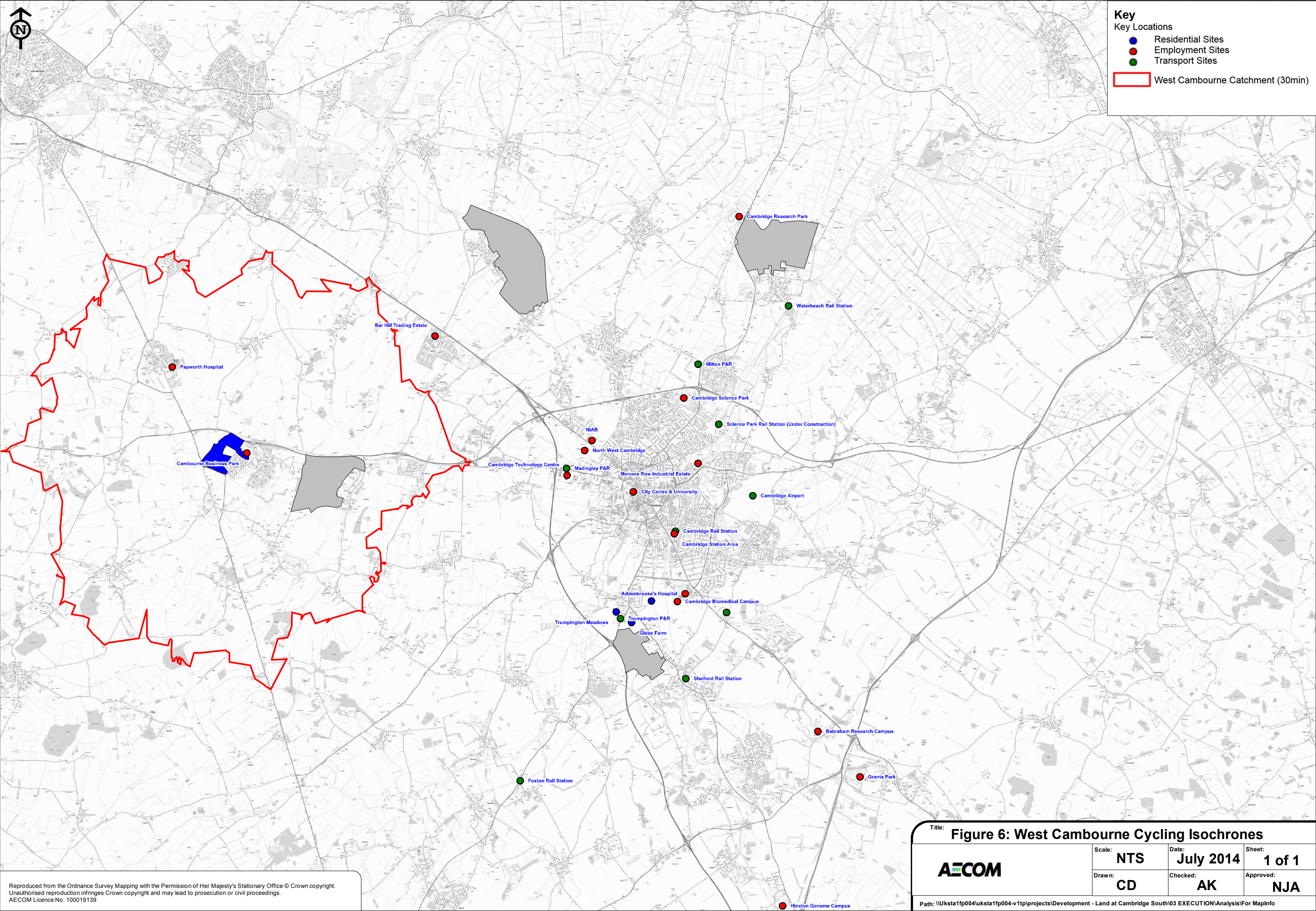


**Title: Figure 5: Cambridge South Walking Catchment**

<b>AECOM</b>	Scale: <b>NTS</b>	Date: <b>July 2014</b>	Sheet: <b>1 of 1</b>
	Drawn: <b>CD</b>	Checked: <b>AK</b>	Approved: <b>NJA</b>

Path: \\uksta1fp004\uksta1fp004-v1tp\projects\Development - Land at Cambridge South\03 EXECUTION\Analysis\For Map\Info

Reproduced from the Ordnance Survey Mapping with the Permission of Her Majesty's Stationary Office © Crown copyright.  
 Unauthorised reproduction infringes Crown copyright and may lead to prosecution or civil proceedings.  
 AECOM Licence No. 100019139



Reproduced from the Ordnance Survey Mapping with the Permission of Her Majesty's Stationary Office © Crown copyright. Unauthorised reproduction infringes Crown copyright and may lead to prosecution or civil proceedings. AECOM Licence No. 100019139

**Title: Figure 6: West Camboorne Cycling Isochrones**

<b>AECOM</b>	Scale: <b>NTS</b>	Date: <b>July 2014</b>	Sheet: <b>1 of 1</b>
	Drawn: <b>CD</b>	Checked: <b>AK</b>	Approved: <b>NJA</b>

Path: \\Uksta1fp004\uksta1fp004-v1fp\projects\Development - Land at Cambridge South\03 EXECUTION\Analysis\For Map\Info