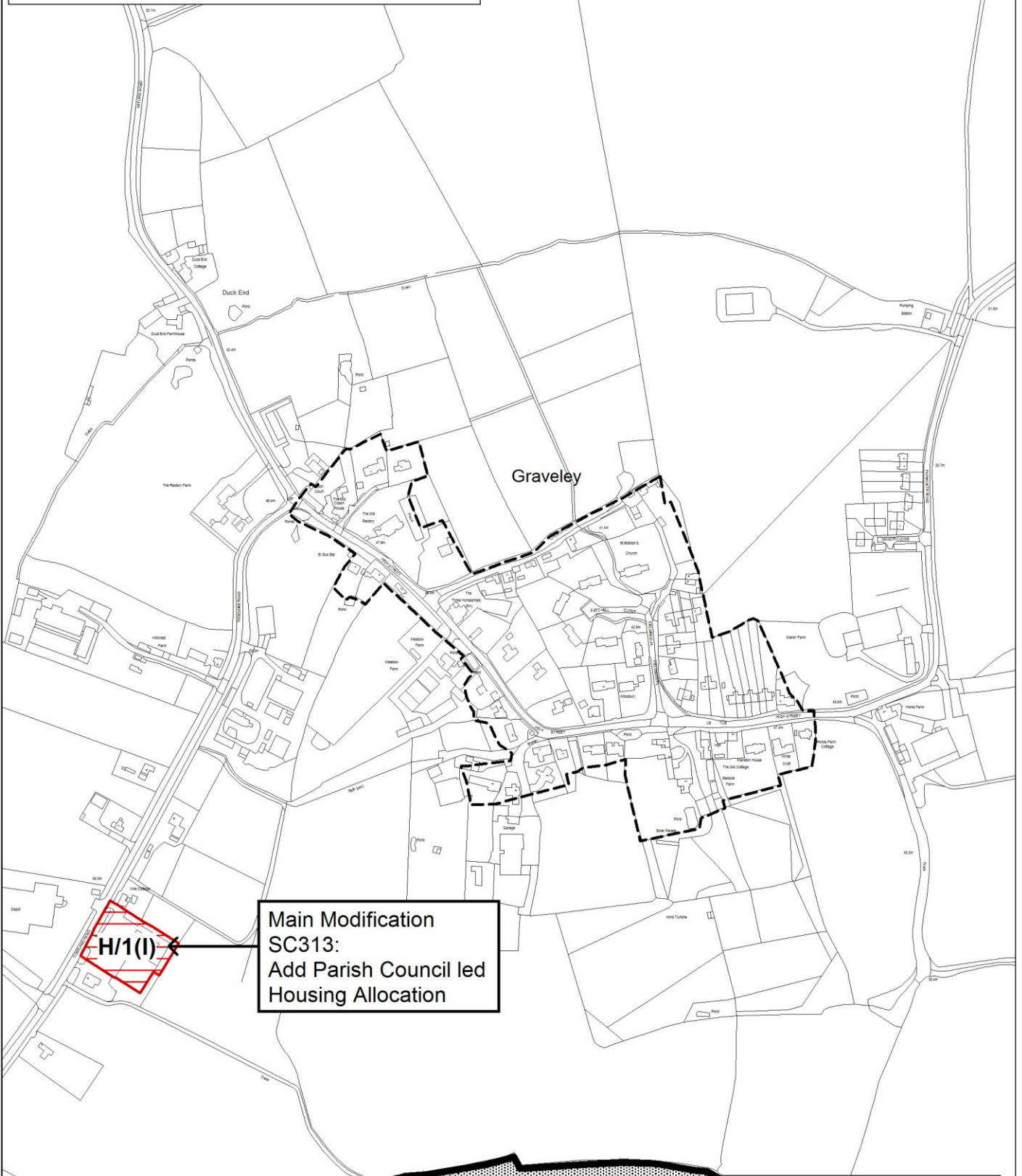


**South Cambridgeshire Local Plan
Composite Main Modifications - 2018**



**Main Modification
SC313:
Add Parish Council led
Housing Allocation**

**South Cambridgeshire
Proposed Submission
Policies Map: July 2013**
Inset No. 40 Graveley
Map 1 of 1
Scale 1:5000

Reproduced from the Ordnance Survey Mapping with the permission of the Controller of Her Majesty's Stationery Office © Crown Copyright. Unauthorised reproduction infringes Crown Copyright and may lead to prosecution or civil proceedings.

NO FURTHER COPIES MAY BE MADE. SCDC Licence 100022500 (2015)

**South Cambridgeshire Local Plan
Composite Main Modifications - 2018**



Main Modification SC314b:
Delete Local Green Space site
NH/12-104 and replace with
Protected Village Amenity Area,
with an amended boundary to
exclude proposed new housing
allocation Policy H/1(k) Land at
Bancroft Farm, Church Lane

Little Abington

H/1 (k)

Main Modification SC314d:
Add the housing allocation
H/1k at Bancroft Farm,
Church Lane, Little Abington

NH/12-103

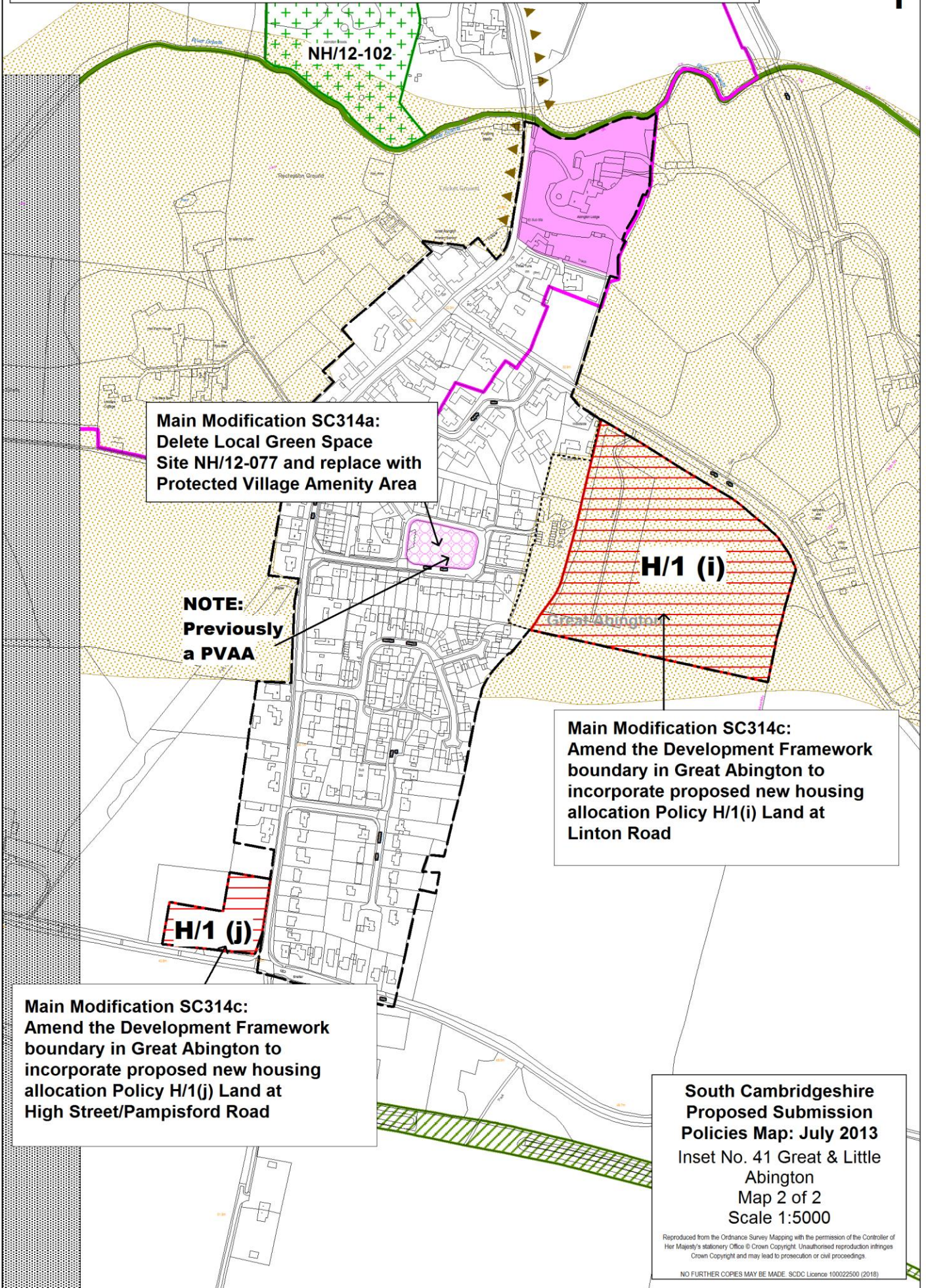
NH/12-102

**South Cambridgeshire
Proposed Submission
Policies Map: July 2013**
Inset No. 41 Great & Little
Abington
Map 1 of 2
Scale 1:5000

Reproduced from the Ordnance Survey Mapping with the permission of the Controller of Her Majesty's Stationery Office © Crown Copyright. Unauthorised reproduction infringes Crown Copyright and may lead to prosecution or civil proceedings.

NO FURTHER COPIES MAY BE MADE. SDC Licence 100022500 (2018)

South Cambridgeshire Local Plan Composite Main Modifications - 2018



Main Modification SC314a:
Delete Local Green Space Site NH/12-077 and replace with Protected Village Amenity Area

NOTE:
Previously a PVAA

Main Modification SC314c:
Amend the Development Framework boundary in Great Abington to incorporate proposed new housing allocation Policy H/1(i) Land at Linton Road

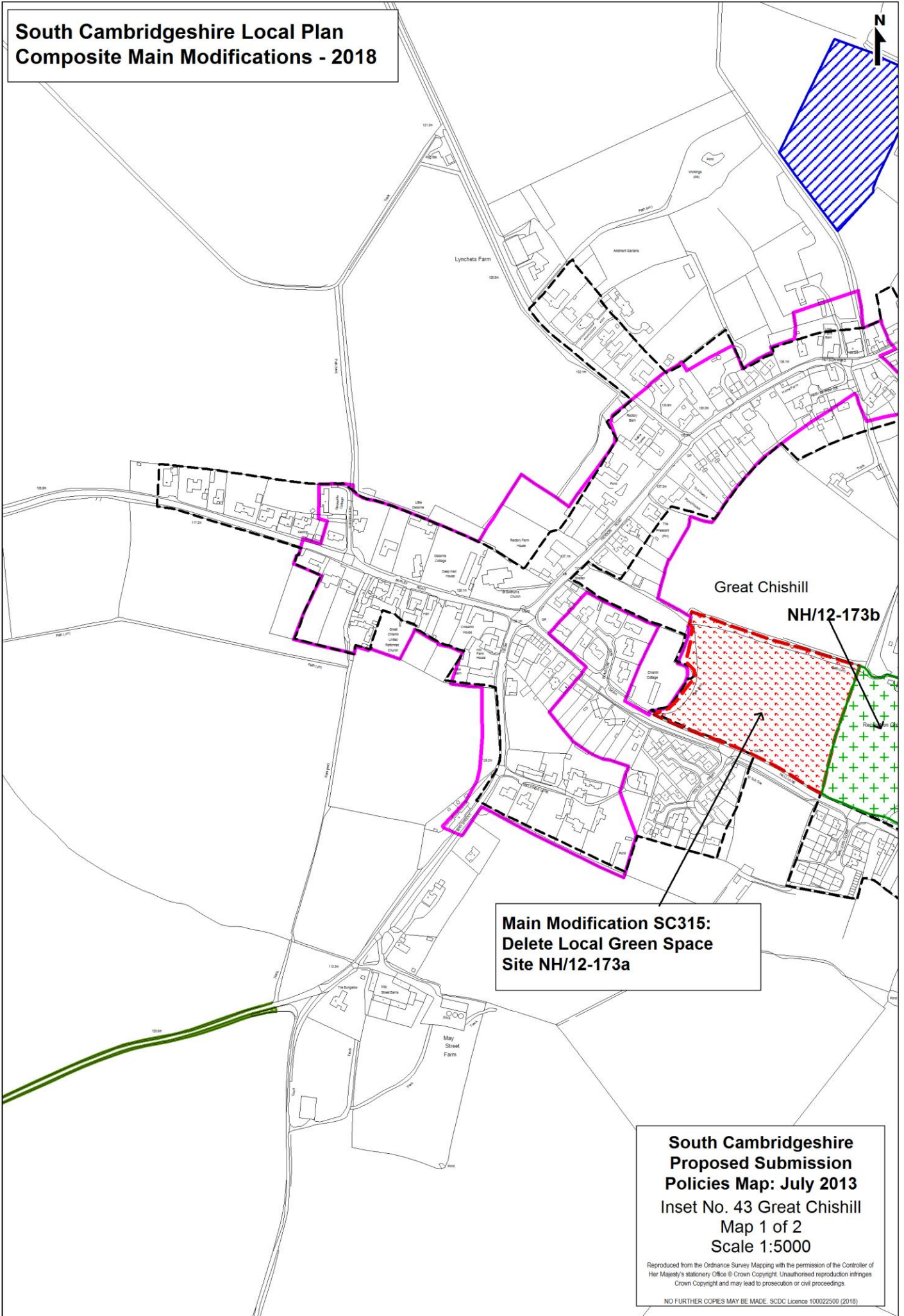
Main Modification SC314c:
Amend the Development Framework boundary in Great Abington to incorporate proposed new housing allocation Policy H/1(j) Land at High Street/Pampisford Road

South Cambridgeshire Proposed Submission Policies Map: July 2013
Inset No. 41 Great & Little Abington
Map 2 of 2
Scale 1:5000

Reproduced from the Ordnance Survey Mapping with the permission of the Controller of Her Majesty's Stationery Office © Crown Copyright. Unauthorised reproduction infringes Crown Copyright and may lead to prosecution or civil proceedings.

NO FURTHER COPIES MAY BE MADE. SDCD Licence 100022500 (2018)

**South Cambridgeshire Local Plan
Composite Main Modifications - 2018**

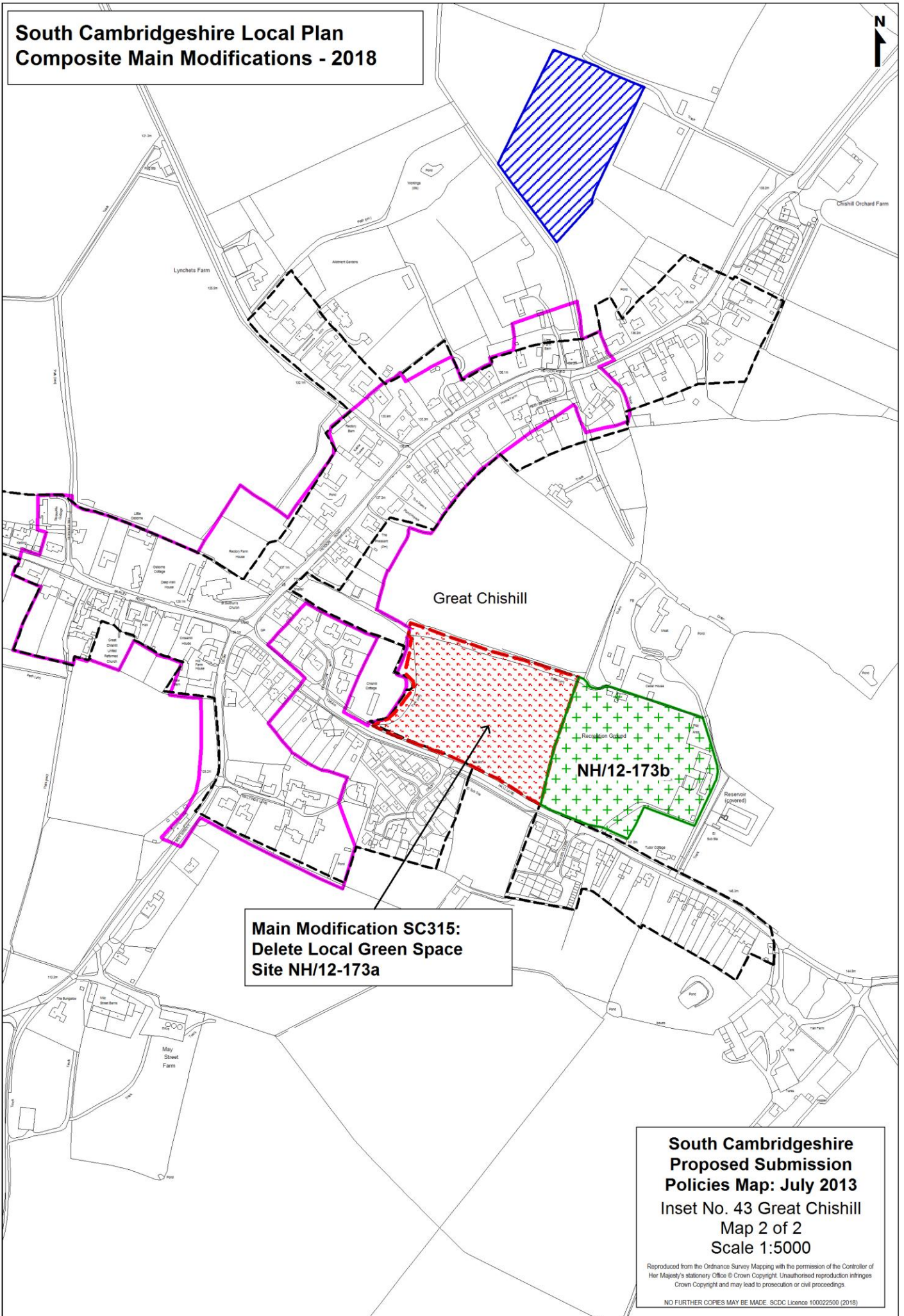


**Main Modification SC315:
Delete Local Green Space
Site NH/12-173a**

**South Cambridgeshire
Proposed Submission
Policies Map: July 2013**
Inset No. 43 Great Chishill
Map 1 of 2
Scale 1:5000

Reproduced from the Ordnance Survey Mapping with the permission of the Controller of Her Majesty's Stationery Office © Crown Copyright. Unauthorised reproduction infringes Crown Copyright and may lead to prosecution or civil proceedings.
NO FURTHER COPIES MAY BE MADE. SDCD Licence 100022500 (2018)

**South Cambridgeshire Local Plan
Composite Main Modifications - 2018**



**Main Modification SC315:
Delete Local Green Space
Site NH/12-173a**

**South Cambridgeshire
Proposed Submission
Policies Map: July 2013**
Inset No. 43 Great Chishill
Map 2 of 2
Scale 1:5000

Reproduced from the Ordnance Survey Mapping with the permission of the Controller of Her Majesty's Stationery Office © Crown Copyright. Unauthorised reproduction infringes Crown Copyright and may lead to prosecution or civil proceedings.

NO FURTHER COPIES MAY BE MADE. SDCDC Licence 100022500 (2018)

**South Cambridgeshire Local Plan
Composite Main Modifications - 2018**



**SP/7
(NOTE: no policy area
in Draft Local Plan)**

**Main Modification SC316:
Delete Open Space Allocation
Policy SC/1 (1e)**

**South Cambridgeshire
Proposed Submission
Policies Map: July 2013**
Inset No. 45 Great Shelford
& Stapleford
Map 4 of 6
Scale 1:5000

Reproduced from the Ordnance Survey Mapping with the permission of the Controller of Her Majesty's Stationery Office © Crown Copyright. Unauthorised reproduction infringes Crown Copyright and may lead to prosecution or civil proceedings.

NO FURTHER COPIES MAY BE MADE. SDCDC Licence 100022500 (2018)

**South Cambridgeshire Local Plan
Composite Main Modifications - 2018**



**Main Modification SC317b:
Delete Local Green Space
Site NH/12-080 and replace with
Protected Village Amenity Area**

**Main Modification SC317a:
Delete Local Green Space
Site NH/12-079 and replace with
Protected Village Amenity Area
(Note: PVAA on Adopted
Proposals Map 2012)**

NH/12-078

**Main Modification SC317c:
Delete Local Green Space
Site NH/12-082 and replace with
Protected Village Amenity Area**

**Main Modification SC317d:
Delete Local Green Space
Site NH/12-083 and replace with
Protected Village Amenity Area**

**Main Modification SC317e:
Delete Local Green Space
Site NH/12-081**

**South Cambridgeshire
Proposed Submission
Policies Map: July 2013
Inset No. 47 Guilden Morden
Map 1 of 2
Scale 1:5000**

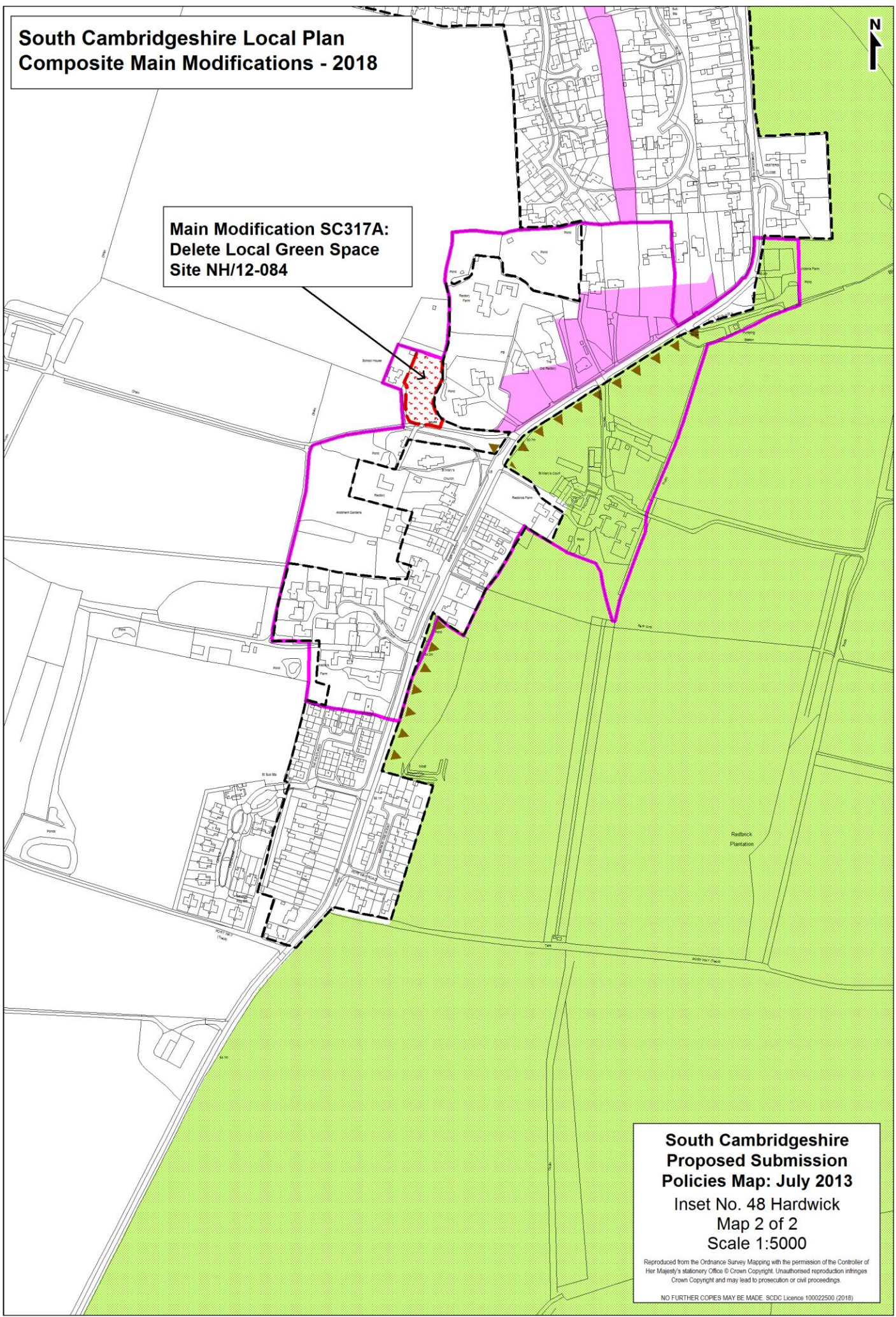
Reproduced from the Ordnance Survey Mapping with the permission of the Controller of Her Majesty's Stationery Office © Crown Copyright. Unauthorised reproduction infringes Crown Copyright and may lead to prosecution or civil proceedings.

NO FURTHER COPIES MAY BE MADE. SDCD Licence 100022500 (2018)

**South Cambridgeshire Local Plan
Composite Main Modifications - 2018**



**Main Modification SC317A:
Delete Local Green Space
Site NH/12-084**



**South Cambridgeshire
Proposed Submission
Policies Map: July 2013**
Inset No. 48 Hardwick
Map 2 of 2
Scale 1:5000

Reproduced from the Ordnance Survey Mapping with the permission of the Controller of Her Majesty's Stationery Office © Crown Copyright. Unauthorised reproduction infringes Crown Copyright and may lead to prosecution or civil proceedings.

NO FURTHER COPIES MAY BE MADE. SDCS Licence 100022500 (2018)

**South Cambridgeshire Local Plan
Composite Main Modifications - 2018**



Harston

NH/12-086

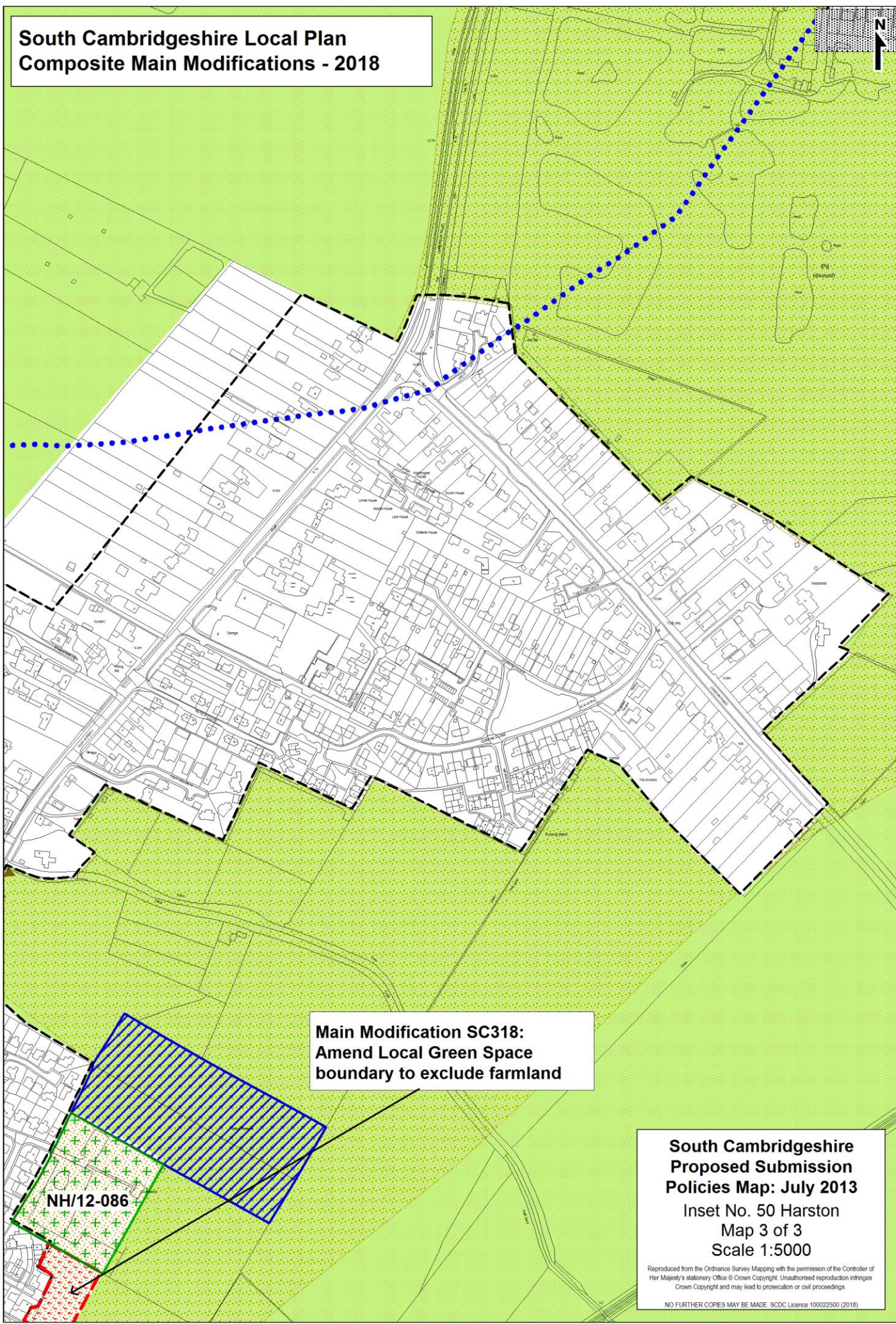
**Main Modification SC318:
Amend Local Green Space
boundary to exclude farmland**

**South Cambridgeshire
Proposed Submission
Policies Map: July 2013**
Inset No. 50 Harston
Map 2 of 3
Scale 1:5000

Reproduced from the Ordnance Survey Mapping with the permission of the Controller of Her Majesty's Stationery Office © Crown Copyright. Unauthorised reproduction infringes Crown Copyright and may lead to prosecution or civil proceedings.

NO FURTHER COPIES MAY BE MADE. SDCD Licence 100022500 (2018)

**South Cambridgeshire Local Plan
Composite Main Modifications - 2018**



**Main Modification SC318:
Amend Local Green Space
boundary to exclude farmland**

NH/12-086

**South Cambridgeshire
Proposed Submission
Policies Map: July 2013**
Inset No. 50 Harston
Map 3 of 3
Scale 1:5000

Reproduced from the Ordnance Survey Mapping with the permission of the Controller of Her Majesty's Stationery Office © Crown Copyright. Unauthorised reproduction infringes Crown Copyright and may lead to prosecution or civil proceedings.

NO FURTHER COPIES MAY BE MADE. SDCD Licence 100022500 (2018)

**South Cambridgeshire
Proposed Submission
Policies Map: July 2013**
Inset No. 51 Haslingfield
Map 1 of 2
Scale 1:5000

Reproduced from the Ordnance Survey Mapping with the permission of the Controller of Her Majesty's Stationery Office © Crown Copyright. Unauthorised reproduction infringes Crown Copyright and may lead to prosecution or civil proceedings.

NO FURTHER COPIES MAY BE MADE. SDC Licence 100022500 (2018)



**NOTE:
Previously
a PVAA**

**Main Modification SC319:
Delete Local Green Space
Site NH/12-087d and replace with
Protected Village Amenity Area**

NH/12-087a

NH/12-087b

NH/12-087c

Haslingfield

**South Cambridgeshire Local Plan
Composite Main Modifications - 2018**